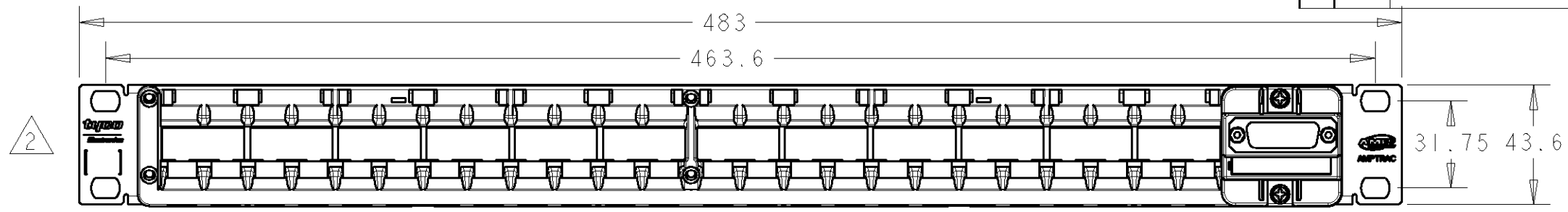
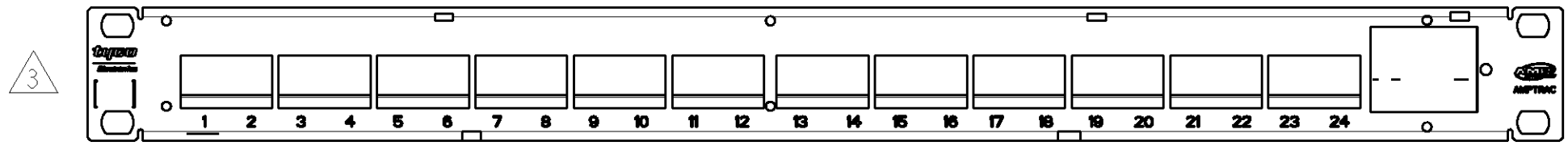


THIS DRAWING IS UNPUBLISHED. RELEASED FOR PUBLICATION 20
© COPYRIGHT 20 BY TYCO ELECTRONICS CORPORATION. ALL RIGHTS RESERVED.

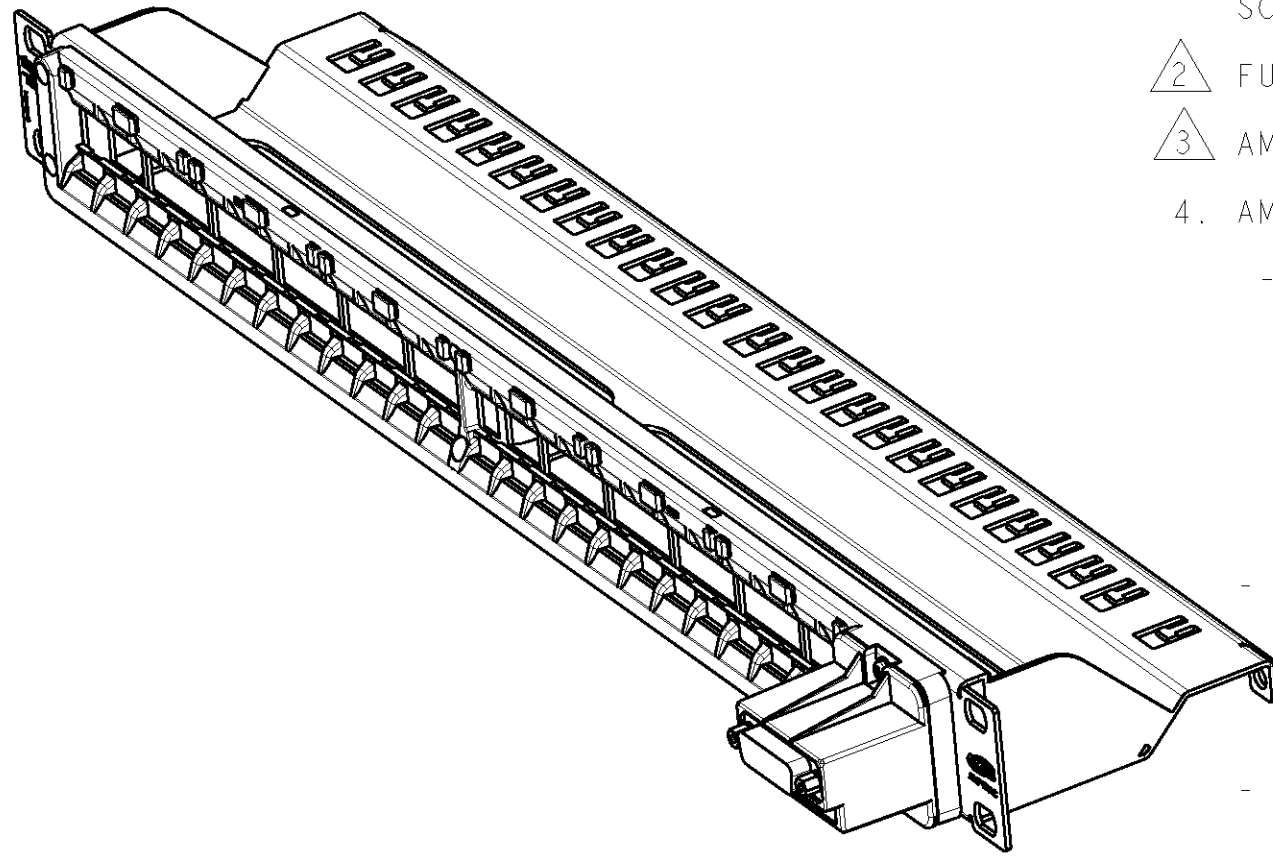
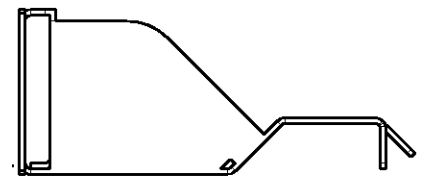
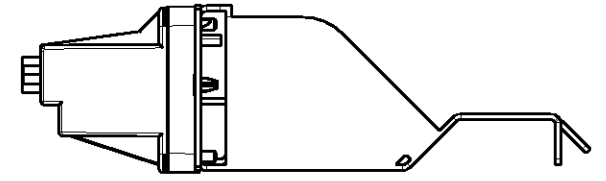
LOC	DIST	REVISIONS			
P	LTR	DESCRIPTION	DATE	DWN	APVD
1K	2	C	ADDED DASH -24	02JAN2007	RM JS
		D	ECR-07-010311	06-Aug-07	JG JS



SCALE 1:2



SCALE 1:2



SCALE 1:2

- PACKAGING: BOX WITH PANEL IN INDIVIDUAL BAG WITH SCREW-SET BAG PN 336546-1 AND TIES. GROUND CONN. INCLUDED
- FULL AMPTRAC SL PANEL WITH AMPTRAC APPLICATION (PN 1711148-1) ASSEMBLED.
- AMPTRAC READY SL PANEL UPGRADABLE WITH AMPTRAC APPLICATION (PN 1711148-1)
- AMPTRAC SL PANEL FITS WITH THE FOLLOWING SL JACKS

- SL SERIES 110 CONNECT JACKS:

- 0-1375055-X
- 0-1375191-X
- 0-1375192-X
- 0-1375188-1
- 0-1375189-1
- 0-1711342-1

- SL SERIE TOOLLESS JACKS

- 0-1116604-X
- 0-1116603-X
- 0-1339015-1

- SL MT-RJ WORKSTATION JACKS

24	3	-	BLACK RAL 9005	-24
-	3	-	GREY RAL 7035	-3
-	3	-	BLACK RAL 9005	-2
-	2	YES	BLACK RAL 9005	-1
AMP-TWIST Cat6 SL JACK WITH PN 0-1711342-1 SUPPLIED (NOT ASSEMBLED)	AMPTRAC APPLICATION KIT WITH PN 1711148-1 ASSEMBLED		COLOR	DASH

THIS DRAWING IS A CONTROLLED DOCUMENT FOR TYCO ELECTRONICS CORPORATION IT IS SUBJECT TO CHANGE AND THE CONTROLLING ENGINEERING ORGANIZATION SHOULD BE CONTACTED FOR THE LATEST REVISION.

DIMENSIONS:	TOLERANCES UNLESS OTHERWISE SPECIFIED:
mm	
0 PLC	±
1 PLC	±0.5
2 PLC	±0.13
3 PLC	±0.013
4 PLC	±0.0001
ANGLES	±
MATERIAL	FINISH

DWN	R.MATEO	23OCT2004
CHK	A.PUELL	23OCT2004
APVD	J.SANABRA	21DEC2004
PRODUCT SPEC		
APPLICATION SPEC		
114-93003		
WEIGHT		
CUSTOMER DRAWING		

tyco Electronics		Tyco Electronics AMP España, S.A. Barcelona. Spain.	
NAME AMPTRAC SL PANEL OR AMPTRAC READY SL PANEL, 24 PORTS FLUSH MOUNT			
SIZE	CAGE CODE	DRAWING NO	RESTRICTED TO
A3	00779	C-1711278	-
SCALE 1:5		SHEET 1	OF 1
		REV	D